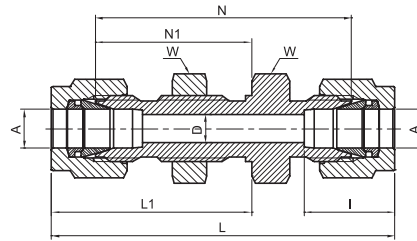


# BULKHEAD UNION

## TBU



TUBE (METRIC) TO TUBE (METRIC)																				
Part Number	A Tube O.D.		D		W Hex. flat		N		N1		L		L1		I		Panel hole drill size		Max. panel thickness	
	mm	mm	mm	mm	mm	mm	mm	mm	mm	mm	mm	mm	mm	mm	mm	mm	mm	mm	mm	mm
TBU - 3M	3		2.4		14		38.1		24.6		51.3		31.2		12.9		8.3		12.7	
TBU - 4M	4		2.4		14		40.4		25.4		53.6		32.0		13.7		9.9		12.7	
TBU - 6M	6		4.8		16		42.9		26.2		57.7		33.6		15.3		11.5		10.2	
TBU - 8M	8		6.4		18		46		28.6		61.0		36.1		16.2		13.1		11.2	
TBU - 10M	10		7.9		22		48.5		29.4		63.7		37.0		17.2		16.25		11.2	
TBU - 12M	12		9.5		24		50.8		31.8		71.0		41.9		22.8		19.5		12.7	
TBU - 15M	15		11.9		27		52.3		32.5		72.5		42.6		24.4		22.8		12.7	
TBU - 16M	16		12.7		27		52.3		32.5		72.5		42.6		24.4		22.8		12.7	
TBU - 18M	18		15.1		30		58.7		37.3		78.9		47.4		24.4		26.0		16.8	
TBU - 20M	20		15.9		35		64.3		42.9		84.5		53.0		26.0		29.0		23.9	
TBU - 22M	22		18.3		35		64.3		42.9		84.5		53.0		26.0		29.0		19.1	
TBU - 25M	25		21.8		41		71.4		45.2		95.9		57.5		31.3		33.7		19.0	
TBU - 32M	32		28.6		50		82.3		49.5		128.3		72.5		42.0		42.5		19.0	
TBU - 38M	38		33.7		60		89.4		51.5		144.6		79.1		49.4		50.5		19.0	

TUBE (INCH) TO TUBE (INCH)																				
Part Number	A Tube O.D.		D		W Hex. flat		N		N1		L		L1		I		Panel hole drill size		Max. panel thickness	
	in	mm	in	mm	in	mm	in	mm	in	mm	in	mm	in	mm	in	mm	in	mm	in	mm
TBU - 1	1/16	1.58	0.05	1.27	5/16	7.9	0.94	23.88	0.53	13.46	1.24	31.5	0.68	17.3	0.34	8.6	13/64	5.16	0.12	3.05
TBU - 2	1/8	3.17	0.09	2.28	1/2	12.7	1.5	38.1	0.97	24.63	2.02	51.3	1.23	31.24	0.5	12.7	21/64	8.33	0.5	12.7
TBU - 3	3/16	4.76	0.12	3.04	9/16	14.3	1.59	40.38	1	25.4	2.11	53.59	1.26	32	0.54	13.7	25/64	9.92	0.5	12.7
TBU - 4	1/4	6.35	0.19	4.82	5/8	15.9	1.69	42.92	1.03	26.16	2.27	57.65	1.32	33.52	0.6	15.3	29/64	11.5	0.4	10.16
TBU - 5	5/16	7.93	0.25	6.35	11/16	17.5	1.81	45.97	1.12	28.44	2.39	60.7	1.41	35.81	0.64	16.2	33/64	13.09	0.44	11.17
TBU - 6	3/8	9.52	0.28	7.11	3/4	19.1	1.87	47.5	1.16	29.46	2.45	62.2	1.45	36.83	0.66	16.9	37/64	14.68	0.44	11.17
TBU - 8	1/2	12.7	0.41	10.41	15/16	23.8	2	50.2	1.25	31.75	2.8	71.12	1.65	41.91	0.9	22.9	49/64	19.44	0.5	12.7
TBU - 10	5/8	15.87	0.5	12.7	1-1/16	27	2.06	52.32	1.28	32.51	2.86	72.64	1.68	42.67	0.96	24.4	57/64	22.62	0.5	12.7
TBU - 12	3/4	19.05	0.62	15.9	1-3/16	30.2	2.31	58.67	1.47	37.33	3.11	78.99	1.87	47.49	0.96	24.5	1-1/64	25.79	0.66	16.76
TBU - 16	1	25.4	0.88	22.35	1-5/8	41.3	2.81	71.37	1.78	45.21	3.77	95.76	2.26	57.4	1.23	31.2	1-21/64	33.73	0.75	19.05
TBU - 20	1-1/4	31.75	1.09	27.7	1-7/8	47.6	3.11	79	1.88	47.75	4.85	123.19	2.75	69.85	1.62	41.2	1-41/64	41.67	0.75	19.05
TBU - 24	1-1/2	38.1	1.34	34	2-1/4	57.2	3.34	84.8	1.94	49.28	5.48	139.19	3.01	76.45	1.97	50	1-61/64	49.61	0.75	19.05
TBU - 32	2	50.8	1.81	45.97	2-3/4	69.9	4.16	105.66	2.22	56.39	7.1	180.34	3.69	93.73	2.66	67.6	2-41/64	67.07	0.75	19.05

"D" - Dimension is minimum opening - dimensions are for reference only, and are subject to change without notice.