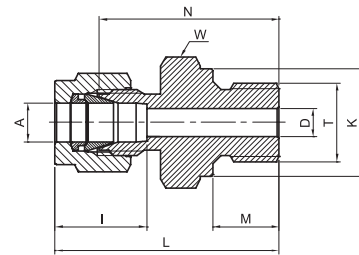
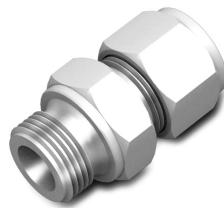


MALE CONNECTOR FOR BONDED WASHER SEAL

TMC

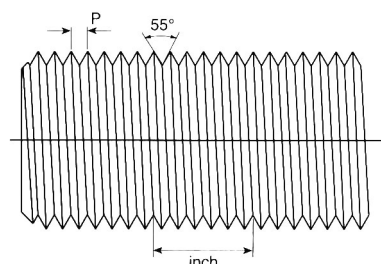


TUBE (METRIC) ISO PARALLEL THREAD

Part Number	A	T	D	K	W	N	M	L	I
	Tube O.D.	ISO							
	mm	in	mm	mm	mm	mm	mm	mm	mm
TMC - 2M - 2RS	2	G 1/8	1.7	13.8	14	23.4	7.1	30.0	12.9
TMC - 3M - 2RS	3	G 1/8	2.4	13.8	14	23.4	7.1	30.0	12.9
TMC - 3M - 4RS	3	G 1/4	2.4	18.0	19	28.7	11.2	35.3	12.9
TMC - 4M - 2RS	4	G 1/8	2.4	13.8	14	24.1	7.1	30.7	13.7
TMC - 6M - 2RS	6	G 1/8	4.0	13.8	14	24.9	7.1	24.9	15.3
TMC - 6M - 4RS	6	G 1/4	4.8	18.0	19	30.2	11.2	37.6	15.3
TMC - 6M - 6RS	6	G 3/8	4.8	21.8	22	31.5	11.2	38.9	15.3
TMC - 6M - 8RS	6	G 1/2	4.8	26.0	27	37.3	14.2	44.7	15.3
TMC - 8M - 2RS	8	G 1/8	4.0	13.8	15	25.7	7.1	33.2	16.2
TMC - 8M - 4RS	8	G 1/4	6.4	18.0	19	31.0	11.2	38.5	16.2
TMC - 8M - 6RS	8	G 3/8	6.4	21.8	22	32.3	11.2	39.8	16.2
TMC - 8M - 8RS	8	G 1/2	6.4	26.0	27	38.1	14.2	45.6	16.2
TMC - 10M - 4RS	10	G 1/4	5.9	18.0	19	31.8	11.2	39.4	17.2
TMC - 10M - 6RS	10	G 3/8	7.9	21.8	22	33.0	11.2	40.6	17.2
TMC - 10M - 8RS	10	G 1/2	7.9	26.0	27	38.9	14.2	46.5	17.2
TMC - 12M - 4RS	12	G 1/4	5.9	18.0	22	32.5	11.2	42.6	22.8
TMC - 12M - 6RS	12	G 3/8	7.9	21.8	22	33.0	11.2	43.1	22.8
TMC - 12M - 8RS	12	G 1/2	9.5	26.0	27	38.9	14.2	49.0	22.8
TMC - 12M - 12RS	12	G 3/4	9.5	32.0	35	42.7	15.7	52.8	22.8
TMC - 16M - 6RS	16	G 3/8	7.9	21.8	24	33.8	11.2	43.9	24.4
TMC - 16M - 8RS	16	G 1/2	11.9	26.0	27	38.9	14.2	49.0	24.4
TMC - 18M - 8RS	18	G 1/2	11.9	26.0	27	38.9	14.2	49.0	24.4
TMC - 18M - 12RS	18	G 3/4	15.1	32.0	35	42.7	15.7	52.8	24.4
TMC - 20M - 8RS	20	G 1/2	11.9	26.0	30	40.4	14.2	50.5	26.0
TMC - 20M - 12RS	20	G 3/4	15.9	32.0	35	42.7	15.7	52.8	26.0
TMC - 22M - 12RS	22	G 3/4	15.9	32.0	35	42.7	15.7	52.8	26.0
TMC - 22M - 16RS	22	G 1	18.3	39.0	41	45.2	18.3	55.3	26.0
TMC - 25M - 12RS	25	G 3/4	15.9	32.0	35	45.2	15.7	57.5	31.3
TMC - 25M - 16RS	25	G 1	19.8	39	41	47.8	18.3	60.1	31.3
TMC - 28M - 16RS	28	G1	19.8	39	40	49.3	18.3	70.1	36.6
TMC - 28M - 20RS	28	G 1-1/4	21.8	49	50	53.1	19.8	73.9	36.6
TMC - 32M - 20RS	32	G 1-1/4	25.0	49	50	55.9	19.8	78.9	42.0
TMC - 38M - 24RS	38	G 1-1/2	31.8	54.7	55	63.2	22.1	90.8	49.4

Reference Specifications :

- DIN - ISO 228/1
- BS - 2779
- JIS - B0202
- ISO - 228/1-BSP-P



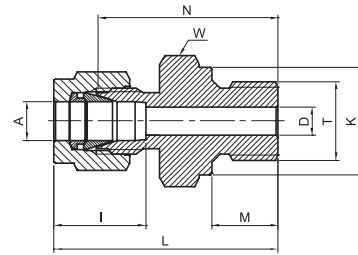
- 55° Thread angle
- Pitch measured in inches
- Root and crest truncation are round
- Diameter measured in inches

For inches, see next page

"D" - Dimension is minimum opening - dimensions are for reference only, and are subject to change without notice.

MALE CONNECTOR FOR BONDED WASHER SEAL

TMC



TUBE (INCH) ISO PARALLEL THREAD																	
Part Number	A Tube O.D.		T ISO	D		K		W Hex. flat		N		M		L		I	
	in	mm		in	mm	in	mm	in	mm	in	mm	in	mm	in	mm		
TMC - 2 - 2RS	1/8	3.17	G 1/8	0.09	2.30	0.54	13.8	9/16	14.3	0.92	23.40	0.28	7.10	1.18	30.00	0.50	12.7
TMC - 2 - 4RS	1/8	3.17	G 1/4	0.09	2.30	0.71	18.0	3/4	19.1	1.13	28.70	0.44	11.20	1.39	35.30	0.50	12.7
TMC - 2 - 6RS	1/8	3.17	G 3/8	0.09	2.30	0.86	21.8	7/8	22.2	1.17	29.72	0.44	11.20	1.46	37.00	0.50	12.7
TMC - 2 - 8RS	1/8	3.17	G 1/2	0.09	2.30	1.02	26.0	1-1/16	27.0	1.40	35.70	0.56	14.20	1.69	43.00	0.50	12.7
TMC - 3 - 2RS	3/16	4.76	G 1/8	0.12	3.10	0.54	13.8	9/16	14.3	0.95	24.10	0.28	7.10	1.20	30.70	0.54	13.7
TMC - 4 - 2RS	1/4	6.35	G 1/8	0.16	4.10	0.54	13.8	9/16	14.3	0.98	24.90	0.28	7.10	1.27	32.26	0.60	15.3
TMC - 4 - 4RS	1/4	6.35	G 1/4	0.19	4.80	0.71	18.0	3/4	19.1	1.19	30.20	0.44	11.20	1.48	37.60	0.60	15.3
TMC - 4 - 6RS	1/4	6.35	G 3/8	0.19	4.80	0.86	21.8	7/8	22.2	1.24	31.50	0.44	11.20	1.53	38.86	0.60	15.3
TMC - 4 - 8RS	1/4	6.35	G 1/2	0.19	4.80	1.02	26.0	1-1/16	27.0	1.47	37.30	0.56	14.20	1.76	44.70	0.60	15.3
TMC - 5 - 4RS	5/16	7.93	G 1/4	0.25	6.40	0.71	18.0	3/4	19.1	1.22	31.00	0.44	11.20	1.51	38.36	0.63	16.2
TMC - 5 - 6RS	5/16	7.93	G 3/8	0.25	6.40	0.86	21.8	7/8	22.2	1.27	32.30	0.44	11.20	1.56	39.66	0.63	16.2
TMC - 6 - 4RS	3/8	9.52	G 1/4	0.23	5.80	0.71	18.0	3/4	19.1	1.25	31.75	0.44	11.20	1.54	39.11	0.66	16.9
TMC - 6 - 6RS	3/8	9.52	G 3/8	0.28	7.10	0.86	21.8	7/8	22.2	1.30	33.00	0.44	11.20	1.59	40.40	0.66	16.9
TMC - 6 - 8RS	3/8	9.52	G 1/2	0.28	7.10	1.02	26.0	1-1/16	27.0	1.53	38.86	0.56	14.20	1.82	46.22	0.66	16.9
TMC - 8 - 4RS	1/2	12.70	G 1/4	0.23	5.80	0.71	18.0	1-3/16	20.6	1.28	32.50	0.44	11.20	1.68	42.67	0.90	22.9
TMC - 8 - 6RS	1/2	12.70	G 3/8	0.31	7.90	0.86	21.8	7/8	22.2	1.30	33.00	0.44	11.20	1.70	43.18	0.90	22.9
TMC - 8 - 8RS	1/2	12.70	G 1/2	0.41	10.40	1.02	26.0	1-1/16	27.0	1.47	37.40	0.56	14.20	1.93	49.00	0.90	22.9
TMC - 8 - 12RS	1/2	12.70	G 3/4	0.41	10.40	1.26	32.0	1-5/16	33.3	1.68	42.70	0.62	15.70	2.08	52.86	0.90	22.9
TMC - 10 - 6RS	5/8	15.87	G 3/8	0.31	7.90	0.86	21.8	-	24.0	1.33	33.80	0.44	11.20	1.73	43.96	0.96	24.4
TMC - 10 - 8RS	5/8	15.87	G 1/2	0.47	11.90	1.02	26.0	1-1/16	27.0	1.53	38.90	0.56	14.20	1.93	49.10	0.96	24.4
TMC - 12 - 8RS	3/4	19.05	G 1/2	0.47	11.90	1.02	26.0	1-1/16	27.0	1.53	38.86	0.56	14.20	1.93	49.00	0.96	24.5
TMC - 12 - 12RS	3/4	19.05	G 3/4	0.62	15.80	1.26	32.0	1-5/16	33.3	1.68	42.70	0.62	15.70	2.08	52.83	0.96	24.5
TMC - 16 - 8RS	1	25.40	G 1/2	0.47	11.90	1.02	26.0	1-3/8	34.9	1.72	43.70	0.56	14.20	2.20	55.80	1.23	31.2
TMC - 16 - 12RS	1	25.40	G 3/4	0.62	15.90	1.26	32.0	1-3/8	34.9	1.78	45.20	0.62	15.70	2.65	67.30	1.23	31.2
TMC - 16 - 16RS	1	25.40	G 1	0.78	19.80	1.54	39.0	1-5/8	41.3	1.88	47.80	0.72	18.30	2.36	59.94	1.23	31.2

"D" - Dimension is minimum opening - dimensions are for reference only, and are subject to change without notice.