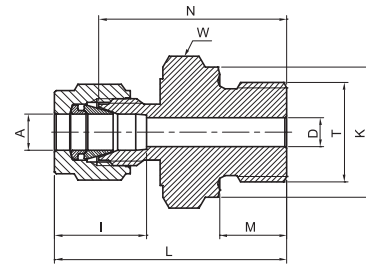


MALE CONNECTOR FOR METAL GASKET SEAL

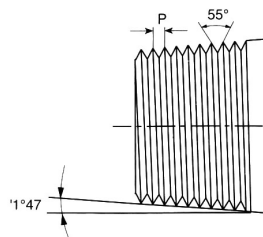
TMC



TUBE (METRIC) ISO PARALLEL THREAD									
Part Number	A	T	D	K	W	N	M	L	I
	Tube O.D.	ISO	mm	mm	Hex. flat	mm	mm	mm	mm
	mm	in	mm	mm	mm	mm	mm	mm	mm
TMC - 3M - 2RP	3	G 1/8	2.4	13.8	14	23.4	7.1	30.0	12.9
TMC - 3M - 4RP	3	G 1/4	2.4	18.0	19	28.7	11.2	35.3	12.9
TMC - 4M - 2RP	4	G 1/8	2.4	13.8	14	24.1	7.1	30.7	13.7
TMC - 6M - 2RP	6	G 1/8	4.0	13.8	14	24.9	7.1	32.3	15.3
TMC - 6M - 4RP	6	G 1/4	4.8	18.0	19	30.2	11.2	37.6	15.3
TMC - 6M - 6RP	6	G 3/8	4.8	21.8	22	31.5	11.2	38.9	15.3
TMC - 6M - 8RP	6	G 1/2	4.8	26.0	27	37.3	14.2	44.7	15.3
TMC - 8M - 2RP	8	G 1/8	4.0	13.8	15	25.7	7.1	33.2	16.2
TMC - 8M - 4RP	8	G 1/4	6.4	18.0	19	31.0	11.2	38.5	16.2
TMC - 8M - 6RP	8	G 3/8	6.4	21.8	22	32.3	11.2	39.8	16.2
TMC - 8M - 8RP	8	G 1/2	6.4	26.0	27	38.1	14.2	45.6	16.2
TMC - 10M - 4RP	10	G 1/4	5.9	18.0	19	31.8	11.2	39.4	17.2
TMC - 10M - 6RP	10	G 3/8	7.9	21.8	22	33.0	11.2	40.6	17.2
TMC - 10M - 8RP	10	G 1/2	7.9	26.0	27	38.9	14.2	46.5	19.5
TMC - 12M - 4RP	12	G 1/4	5.9	18.0	22	32.5	11.2	42.6	17.2
TMC - 12M - 6RP	12	G 3/8	7.9	21.8	22	33.0	11.2	43.1	22.8
TMC - 12M - 8RP	12	G 1/2	9.5	26.0	27	38.9	14.2	49.0	22.8
TMC - 12M - 12RP	12	G 3/4	9.5	32.0	35	42.7	15.7	52.8	22.8
TMC - 15M - 8RP	15	G 1/2	11.9	26.0	27	38.9	14.2	49.0	22.8
TMC - 16M - 6RP	16	G 3/8	7.9	21.8	24	33.8	11.2	43.9	22.4
TMC - 16M - 8RP	16	G 1/2	11.9	26.0	27	38.9	14.2	49.0	22.4
TMC - 18M - 8RP	18	G 1/2	11.9	26.0	27	38.9	14.2	49.0	22.4
TMC - 18M - 12RP	18	G 3/4	15.1	32.0	35	42.7	15.7	52.8	22.4
TMC - 20M - 8RP	20	G 1/2	11.9	26.0	30	40.4	14.2	50.5	26.0
TMC - 20M - 12RP	20	G 3/4	15.9	32.0	35	42.7	15.7	52.8	26.0
TMC - 22M - 12RP	22	G 3/4	15.9	32.0	35	42.7	15.7	52.8	26.0
TMC - 22M - 16RP	22	G 1	18.3	39.0	40	45.2	18.3	55.3	26.0
TMC - 25M - 12RP	25	G 3/4	15.9	32.0	35	45.2	15.7	57.5	31.3
TMC - 25M - 16RP	25	G 1	19.8	39	40	47.8	18.3	60.1	31.3
TMC - 28M - 16RP	28	G1	19.8	39.0	40	49.3	18.3	70.1	36.6
TMC - 28M - 20RP	28	G 1-1/4	21.8	49.0	50	53.1	19.8	73.9	36.6
TMC - 32M - 20RP	32	G 1-1/4	25.0	49.0	50	55.9	19.8	78.9	42.0
TMC - 38M - 24RP	38	G 1-1/2	31.8	54.7	55	61.7	20.6	89.3	49.4

Reference Specifications :

- DIN - ISO 2999 •55° Thread angle
- BS - 21 •Truncation of root and crest are round
- JIS - B0203 •Taper angle 1° 47'



"D" - Dimension is minimum opening - dimensions are for reference only, and are subject to change without notice.