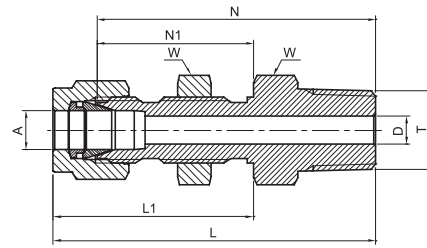


# BULKHEAD MALE CONNECTOR

TBMC



TUBE (METRIC) TO MALE NPT THREAD											
Part Number	A Tube O.D.		T NPT	D	W Hex. flat	N	N1	L	L1	Panel hole drill size	Max. panel thickness
	mm	in	in	mm	mm	mm	mm	mm	mm	mm	mm
TBMC - 6M - 2N	6		1/8	4.8	16	42.2	26.2	49.6	33.6	11.5	10.2
TBMC - 6M - 4N	6		1/4	4.8	16	46.2	26.2	53.6	33.6	11.5	10.2
TBMC - 12M - 8N	12		1/2	9.5	24	58.7	31.8	68.8	41.9	19.5	12.7

15.74TUBE (INCH) TO MALE NPT THREAD																			
Part Number	A Tube O.D.		T NPT	D		W Hex. flat		N		N1		L		L1		Panel hole drill size		Max. panel thickness	
	in	mm	in	in	mm	in	mm	in	mm	in	mm	in	mm	in	mm	in	mm	in	mm
TBMC - 2 - 2N	1/8	3.17	1/8	0.09	2.28	1/2	12.7	1.57	39.90	0.97	24.60	1.83	46.48	1.23	31.24	21/64	8.33	0.50	12.70
TBMC - 4 - 2N	1/4	6.35	1/8	0.19	4.82	5/8	15.9	1.66	42.20	1.03	26.20	1.95	49.53	1.32	33.52	29/64	11.50	0.40	10.16
TBMC - 4 - 4N	1/4	6.35	1/4	0.19	4.82	5/8	15.9	1.84	46.70	1.03	26.16	2.13	54.10	1.32	33.52	29/64	11.50	0.40	10.16
TBMC - 6 - 4N	3/8	9.52	1/4	0.28	7.11	3/4	19.1	1.97	50.00	1.16	29.46	2.26	57.40	1.45	36.83	37/64	14.68	0.44	11.17
TBMC - 8 - 6N	1/2	12.70	3/8	0.40	10.40	15/16	23.8	2.09	53.10	1.25	31.75	2.49	63.25	1.65	41.91	49/64	19.44	0.50	12.70
TBMC - 8 - 8N	1/2	12.70	1/2	0.40	10.40	15/16	23.8	2.31	58.70	1.25	31.70	2.71	68.83	1.65	41.91	49/64	19.44	0.50	12.70
TBMC - 12 - 12N	3/4	19.05	3/4	0.62	15.74	1-3/16	30.16	2.60	66.04	1.47	37.33	3.00	76.20	1.87	47.49	1-1/64	25.76	0.66	16.76
TBMC - 16 - 16N	1	25.40	1	0.88	22.35	1-5/8	41.27	3.19	81.02	1.78	45.21	3.67	93.21	2.26	57.40	1-21/64	33.73	0.75	19.05

"D" - Dimension is minimum opening - dimensions are for reference only, and are subject to change without notice.