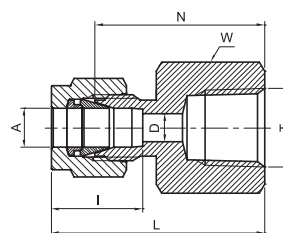
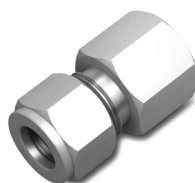


FEMALE CONNECTOR

TFC

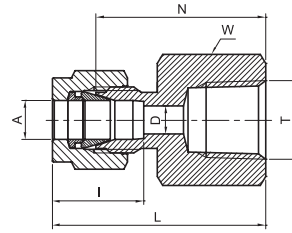


TUBE (METRIC) TO FEMALE NPT THREAD							
Part Number	A Tube O.D.	T NPT	D	W Hex. flat	N	L	I
	mm	in	mm	mm	mm	mm	mm
TFC - 3M - 2N	3	1/8	2.4	14	22.1	28.7	12.7
TFC - 3M - 4N	3	1/4	2.4	19	26.9	33.5	12.7
TFC - 4M - 2N	4	1/8	2.4	14	23.1	29.7	13.7
TFC - 6M - 2N	6	1/8	4.8	14	23.9	31.3	15.3
TFC - 6M - 4N	6	1/4	4.8	19	28.4	35.8	15.3
TFC - 6M - 6N	6	3/8	4.8	22	30.2	37.6	15.3
TFC - 6M - 8N	6	1/2	4.8	27	35.1	42.5	15.3
TFC - 8M - 2N	8	1/8	6.4	15	24.6	32.1	16.2
TFC - 8M - 4N	8	1/4	6.4	19	29.5	37.0	16.2
TFC - 8M - 6N	8	3/8	6.4	22	31.0	38.5	16.2
TFC - 8M - 8N	8	1/2	6.4	27	35.8	43.3	16.2
TFC - 10M - 4N	10	1/4	7.9	19	30.2	37.8	17.2
TFC - 10M - 6N	10	3/8	7.9	22	31.8	39.4	17.2
TFC - 10M - 8N	10	1/2	7.9	27	36.6	44.2	17.2
TFC - 12M - 4N	12	1/4	9.5	22	30.2	40.3	22.8
TFC - 12M - 6N	12	3/8	9.5	22	31.8	41.9	22.8
TFC - 12M - 8N	12	1/2	9.5	27	36.6	46.7	22.8
TFC - 15M - 8N	15	1/2	11.9	27	36.6	46.7	24.4
TFC - 16M - 8N	16	1/2	12.7	27	36.8	46.9	24.4
TFC - 20M - 8N	20	1/2	15.9	30	37.8	47.9	26.0
TFC - 20M - 12N	20	3/4	15.9	35	39.6	49.7	26.0
TFC - 22M - 12N	22	3/4	18.3	35	39.6	49.7	26.0
TFC - 22M - 16N	22	1	18.3	41	47.8	57.9	26.0
TFC - 25M - 12N	25	3/4	21.8	35	41.1	53.4	31.3
TFC - 25M - 16N	25	1	21.8	41	50.0	62.3	31.3

"D" - Dimension is minimum opening - dimensions are for reference only, and are subject to change without notice.

FEMALE CONNECTOR

TFC

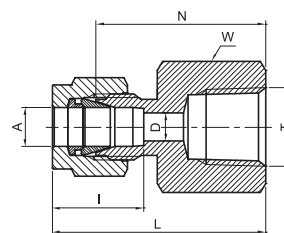


TUBE (INCH) TO FEMALE NPT THREAD													
Part Number	A Tube O.D.		T NPT	D		W Hex. flat		N		L		I	
	in	mm	in	in	mm	in	mm	in	mm	in	mm	in	mm
TFC - 1 - 1N	1/16	1.58	1/16	0.05	1.27	7/16	11.1	0.78	19.81	0.93	23.62	0.34	8.6
TFC - 1 - 2N	1/16	1.58	1/8	0.05	1.27	9/16	14.3	0.81	20.57	0.96	24.38	0.34	8.6
TFC - 2 - 2N	1/8	3.17	1/8	0.09	2.28	9/16	14.3	0.87	22.10	1.13	28.70	0.50	12.7
TFC - 2 - 4N	1/8	3.17	1/4	0.09	2.28	3/4	19.1	1.06	26.92	1.32	33.52	0.50	12.7
TFC - 3 - 2N	3/16	4.76	1/8	0.12	3.04	9/16	14.3	0.91	23.11	1.17	29.71	0.54	13.7
TFC - 4 - 2N	1/4	6.35	1/8	0.19	4.82	9/16	14.3	0.94	23.87	1.23	31.24	0.60	15.3
TFC - 4 - 4N	1/4	6.35	1/4	0.19	4.82	3/4	19.1	1.12	28.44	1.41	35.81	0.60	15.3
TFC - 4 - 6N	1/4	6.35	3/8	0.19	4.82	7/8	22.2	1.19	30.22	1.48	37.59	0.60	15.3
TFC - 4 - 8N	1/4	6.35	1/2	0.19	4.82	1-1/16	27.0	1.38	35.0	1.67	42.42	0.60	15.3
TFC - 5 - 2N	5/16	7.93	1/8	0.25	6.35	9/16	14.3	0.97	24.63	1.26	32.00	0.64	16.3
TFC - 5 - 4N	5/16	7.93	1/4	0.25	6.35	3/4	19.1	1.16	29.46	1.45	36.83	0.64	16.3
TFC - 6 - 2N	3/8	9.52	1/8	0.28	7.11	5/8	15.9	1.00	25.40	1.29	32.76	0.66	16.9
TFC - 6 - 4N	3/8	9.52	1/4	0.28	7.11	3/4	19.1	1.19	30.22	1.48	37.59	0.66	16.9
TFC - 6 - 6N	3/8	9.52	3/8	0.28	7.11	7/8	22.2	1.25	31.75	1.54	39.11	0.66	16.9
TFC - 6 - 8N	3/8	9.52	1/2	0.28	7.11	1-1/16	27.0	1.44	36.57	1.73	43.94	0.66	16.9
TFC - 6 - 12N	3/8	9.52	3/4	0.28	7.11	1-5/16	33.3	1.59	40.38	1.88	47.75	0.66	16.9
TFC - 8 - 4N	1/2	12.70	1/4	0.41	10.41	1-3/16	20.6	1.19	30.2	1.59	40.38	0.90	22.9
TFC - 8 - 6N	1/2	12.70	3/8	0.41	10.41	7/8	22.2	1.25	31.75	1.65	41.91	0.90	22.9
TFC - 8 - 8N	1/2	12.70	1/2	0.41	10.41	1-1/16	27.0	1.44	36.57	1.84	46.73	0.90	22.9
TFC - 8 - 12N	1/2	12.70	3/4	0.41	10.41	1-5/16	33.3	1.50	38.10	1.90	48.26	0.90	22.9
TFC - 10 - 6N	5/8	15.87	3/8	0.50	12.70	1-5/16	23.8	1.25	31.75	1.65	41.91	0.96	24.4
TFC - 10 - 8N	5/8	15.87	1/2	0.50	12.70	1-1/16	27.0	1.44	36.57	1.84	46.73	0.96	24.4
TFC - 10 - 12N	5/8	15.87	3/4	0.5	12.7	1-5/16	33.3	1.50	38.1	1.90	48.26	0.96	24.4
TFC - 12 - 8N	3/4	19.05	1/2	0.62	15.74	1-1/16	27.0	1.44	36.57	1.84	46.73	0.96	24.5
TFC - 12 - 12N	3/4	19.05	3/4	0.62	15.74	1-5/16	33.3	1.50	38.10	1.90	48.26	0.96	24.5
TFC - 14 - 12N	7/8	22.22	3/4	0.72	18.28	1-5/16	33.3	1.56	39.62	1.96	49.78	1.02	25.9
TFC - 16 - 12N	1	25.40	3/4	0.88	22.35	1-3/8	34.9	1.62	41.14	2.10	53.34	1.23	31.2
TFC - 16 - 16N	1	25.4	1	0.88	22.35	1-5/8	41.3	1.97	50.03	2.45	62.23	1.23	31.2
TFC - 20 - 20N	1-1/4	31.75	1-1/4	1.09	27.7	2-1/8	54	2.07	52.59	2.94	74.68	1.62	41.2
TFC - 24 - 24N	1-1/2	38.1	1-1/2	1.34	34.0	2-3/8	60.3	2.21	56.13	3.28	83.31	1.97	50.0
TFC - 32 - 32N	2	50.8	2	1.81	45.97	2-7/8	73	2.53	64.26	4.0	101.6	2.66	67.6

"D" - Dimension is minimum opening - dimensions are for reference only, and are subject to change without notice.

FEMALE CONNECTOR

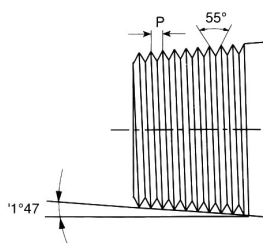
TFC



TUBE (METRIC) TO FEMALE ISO TAPERED THREAD							
Part Number	A Tube O.D.	T ISO	D	W Hex. flat	N	L	I
	mm	in	mm	mm	mm	mm	mm
TFC - 3M - 2P	3	Rc 1/8	2.4	14	22.1	28.7	12.9
TFC - 6M - 2P	6	Rc 1/8	4.8	14	23.9	31.3	15.3
TFC - 6M - 4P	6	Rc 1/4	4.8	19	28.4	35.8	15.3
TFC - 6M - 6P	6	Rc 3/8	4.8	22	30.2	37.6	15.3
TFC - 6M - 8P	6	Rc 1/2	4.8	27	35.1	42.5	15.3
TFC - 8M - 2P	8	Rc 1/8	6.4	15	24.6	32.1	16.2
TFC - 8M - 4P	8	Rc 1/4	6.4	19	29.5	37.0	16.2
TFC - 8M - 6P	8	Rc 3/8	6.4	22	31.0	38.5	16.2
TFC - 8M - 8P	8	Rc 1/2	6.4	27	35.8	43.3	16.2
TFC - 10M - 2P	10	Rc 1/8	7.9	18	25.4	33.0	17.2
TFC - 10M - 4P	10	Rc 1/4	7.9	19	30.2	37.8	17.2
TFC - 10M - 6P	10	Rc 3/8	7.9	22	31.8	39.4	17.2
TFC - 10M - 8P	10	Rc 1/2	7.9	27	36.6	44.2	17.2
TFC - 12M - 2P	12	Rc 1/8	8.3	22	25.4	35.5	22.8
TFC - 12M - 4P	12	Rc 1/4	9.5	22	30.2	40.3	22.8
TFC - 12M - 6P	12	Rc 3/8	9.5	22	31.8	41.9	22.8
TFC - 12M - 8P	12	Rc 1/2	9.5	27	36.6	46.7	22.8
TFC - 12M - 12P	12	Rc 3/4	9.5	35	38.9	49.0	22.8
TFC - 15M - 6P	15	Rc 3/8	11.9	24	31.8	41.9	24.4
TFC - 15M - 8P	15	Rc 1/2	11.9	27	36.6	46.7	24.4
TFC - 20M - 8P	20	Rc 1/2	15.9	30	37.8	47.9	24.4
TFC - 20M - 12P	20	Rc 3/4	15.9	35	39.6	49.7	26.0
TFC - 22M - 12P	22	Rc 3/4	18.3	35	39.6	49.7	26.0
TFC - 22M - 16P	22	Rc 1	18.3	41	47.8	57.9	26.0
TFC - 25M - 12P	25	Rc 3/4	21.8	35	41.1	53.4	31.3
TFC - 25M - 16P	25	Rc 1	21.8	41	50.0	62.3	31.3

Reference Specifications :

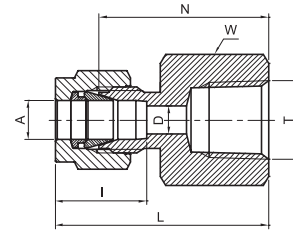
- DIN - ISO 2999 •55° Thread angle
- BS - 21 •Truncation of root and crest are round
- JIS - B0203 •Taper angle 1° 47'



"D" - Dimension is minimum opening - dimensions are for reference only, and are subject to change without notice.

FEMALE CONNECTOR

TFC



TUBE (INCH) TO FEMALE ISO TAPERED THREAD

Part Number	A Tube O.D.		T ISO	D		W Hex. flat		N		L		I	
	in	mm	in	in	mm	in	mm	in	mm	in	mm	in	mm
TFC - 1 - 1P	1/16	1.58	Rc 1/16	0.05	1.27	7/16	11.1	0.78	19.81	0.93	23.62	0.34	8.6
TFC - 1 - 2P	1/16	1.58	Rc 1/8	0.05	1.27	9/16	14.3	0.81	20.57	0.96	24.38	0.34	8.6
TFC - 2 - 2P	1/8	3.17	Rc 1/8	0.09	2.28	9/16	14.3	0.87	22.10	1.13	28.70	0.50	12.7
TFC - 2 - 4P	1/8	3.17	Rc 1/4	0.09	2.28	3/4	19.1	1.06	26.92	1.32	33.52	0.50	12.7
TFC - 3 - 2P	3/16	4.76	Rc 1/8	0.12	3.04	9/16	14.3	0.91	23.11	1.17	29.71	0.54	13.7
TFC - 4 - 2P	1/4	6.35	Rc 1/8	0.19	4.82	9/16	14.3	0.94	23.87	1.23	31.24	0.60	15.3
TFC - 4 - 4P	1/4	6.35	Rc 1/4	0.19	4.82	3/4	19.1	1.12	28.44	1.41	35.81	0.60	15.3
TFC - 4 - 6P	1/4	6.35	Rc 3/8	0.19	4.82	7/8	22.2	1.19	30.22	1.48	37.59	0.60	15.3
TFC - 4 - 8P	1/4	6.35	Rc 1/2	0.19	4.82	1-1/16	27.0	1.38	35.0	1.67	42.42	0.60	15.3
TFC - 5 - 2P	5/16	7.93	Rc 1/8	0.25	6.35	9/16	14.3	0.97	24.63	1.26	32.00	0.64	16.3
TFC - 5 - 4P	5/16	7.93	Rc 1/4	0.25	6.35	3/4	19.1	1.16	29.46	1.45	36.83	0.64	16.3
TFC - 6 - 2P	3/8	9.52	Rc 1/8	0.28	7.11	5/8	15.9	1.00	25.40	1.29	32.76	0.66	16.9
TFC - 6 - 4P	3/8	9.52	Rc 1/4	0.28	7.11	3/4	19.1	1.19	30.22	1.48	37.59	0.66	16.9
TFC - 6 - 6P	3/8	9.52	Rc 3/8	0.28	7.11	7/8	22.2	1.25	31.75	1.54	39.11	0.66	16.9
TFC - 6 - 8P	3/8	9.52	Rc 1/2	0.28	7.11	1-1/16	27.0	1.44	36.57	1.73	43.94	0.66	16.9
TFC - 6 - 12P	3/8	9.52	Rc 3/4	0.28	7.11	1-5/16	33.3	1.59	40.38	1.88	47.75	0.66	16.9
TFC - 8 - 4P	1/2	12.70	Rc 1/4	0.41	10.41	1-3/16	20.6	1.19	30.2	1.59	40.38	0.90	22.9
TFC - 8 - 6P	1/2	12.70	Rc 3/8	0.41	10.41	7/8	22.2	1.25	31.75	1.65	41.91	0.90	22.9
TFC - 8 - 8P	1/2	12.70	Rc 1/2	0.41	10.41	1-1/16	27.0	1.44	36.57	1.84	46.73	0.90	22.9
TFC - 8 - 12P	1/2	12.70	Rc 3/4	0.41	10.41	1-5/16	33.3	1.50	38.10	1.90	48.26	0.90	22.9
TFC - 10 - 6P	5/8	15.87	Rc 3/8	0.50	12.70	1-5/16	23.8	1.25	31.75	1.65	41.91	0.96	24.4
TFC - 10 - 8P	5/8	15.87	Rc 1/2	0.50	12.70	1-1/16	27.0	1.44	36.57	1.84	46.73	0.96	24.4
TFC - 10 - 12P	5/8	15.87	Rc 3/4	0.5	12.7	1-5/16	33.3	1.50	38.1	1.90	48.26	0.96	24.4
TFC - 12 - 8P	3/4	19.05	Rc 1/2	0.62	15.74	1-1/16	27.0	1.44	36.57	1.84	46.73	0.96	24.5
TFC - 12 - 12P	3/4	19.05	Rc 3/4	0.62	15.74	1-5/16	33.3	1.50	38.10	1.90	48.26	0.96	24.5
TFC - 14 - 12P	7/8	22.22	Rc 3/4	0.72	18.28	1-5/16	33.3	1.56	39.62	1.96	49.78	1.02	25.9
TFC - 16 - 12P	1	25.40	Rc 3/4	0.88	22.35	1-3/8	34.9	1.62	41.14	2.10	53.34	1.23	31.2
TFC - 16 - 16P	1	25.40	Rc 1	0.88	22.35	1-3/8	41.3	1.97	50.03	2.45	62.23	1.23	31.2
TFC - 20 - 20P	1-1/4	31.75	1-1/4	1.09	27.7	2-1/8	54.0	2.07	52.59	2.94	74.68	1.62	41.2
TFC - 24 - 24P	1-1/2	38.1	1-1/2	1.34	34.0	2-3/8	60.3	2.21	56.13	3.28	83.31	1.97	50.0
TFC - 32 - 32P	2	50.8	2	1.81	45.97	2-7/8	73.0	2.53	64.26	4.0	101.6	2.66	67.6

"D" - Dimension is minimum opening - dimensions are for reference only, and are subject to change without notice.