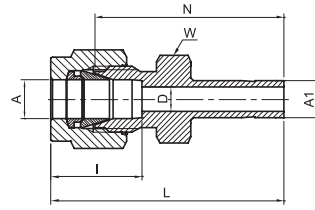


# REDUCER

TR



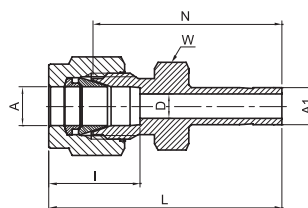
TUBE (METRIC) TO STUB (METRIC)

Part Number	A	A1	D	W Hex. flat	N	L	i
	Tube O.D.	Tube O.D.					
	mm	mm	mm	mm	mm	mm	mm
TR - 2M - 3M	2	3	1.7	12	26.9	33.5	12.9
TR - 3M - 4M	3	4	2.4	12	28.4	35.0	12.9
TR - 3M - 6M	3	6	2.4	12	29.5	36.1	12.9
TR - 3M - 10M	3	10	2.4	14	31.8	38.4	12.9
TR - 4M - 6M	4	6	2.4	12	30.5	37.1	13.7
TR - 6M - 3M	6	3	1.8	14	29.5	36.9	15.3
TR - 6M - 8M	6	8	4.8	14	32.5	39.9	15.3
TR - 6M - 10M	6	10	4.8	14	33.3	40.7	15.3
TR - 6M - 12M	6	12	4.8	14	38.9	46.3	15.3
TR - 6M - 18M	6	18	4.8	22	42.2	49.6	15.3
TR - 8M - 6M	8	6	4.0	15	32.8	40.3	16.2
TR - 8M - 10M	8	10	6.4	15	34.5	42.0	16.2
TR - 8M - 12M	8	12	6.4	15	40.1	47.6	16.2
TR - 10M - 6M	10	6	4.0	18	34.8	42.4	17.2
TR - 10M - 8M	10	8	5.6	18	35.8	43.4	17.2
TR - 10M - 12M	10	12	7.9	18	42.2	49.8	17.2
TR - 10M - 15M	10	15	7.9	18	43.7	51.3	17.2
TR - 10M - 18M	10	18	7.9	22	43.7	51.3	17.2
TR - 12M - 6M	12	6	4.0	22	34.8	44.9	22.8
TR - 12M - 10M	12	10	7.7	22	36.6	46.7	22.8
TR - 12M - 16M	12	16	9.5	22	43.7	53.8	22.8
TR - 12M - 18M	12	18	9.5	22	43.7	53.8	22.8
TR - 12M - 20M	12	20	9.5	22	46.0	56.1	22.8
TR - 12M - 22M	12	22	9.5	24	46.0	46.1	22.8
TR - 12M - 25M	12	25	9.5	27	52.3	62.4	22.8
TR - 16M - 12M	16	12	9.1	24	42.9	53.0	24.4
TR - 18M - 12M	18	12	9.1	27	44.5	54.6	24.4
TR - 18M - 16M	18	16	12.7	27	46.0	56.1	24.4
TR - 18M - 20M	18	20	15.1	27	47.5	57.6	24.4
TR - 18M - 22M	18	22	15.1	27	47.5	57.6	24.4
TR - 18M - 25M	18	25	15.1	27	52.3	62.4	24.4
TR - 20M - 16M	20	16	12.7	30	47.8	57.9	26.0
TR - 20M - 18M	20	18	13.9	30	47.8	57.9	26.0
TR - 20M - 22M	20	22	15.8	30	49.3	59.4	26.0
TR - 20M - 25M	20	25	15.9	30	54.1	64.2	26.0
TR - 22M - 18M	22	18	13.9	30	47.8	57.9	26.0
TR - 22M - 20M	22	20	15.1	30	49.3	59.4	26.0
TR - 22M - 25M	22	25	18.3	30	54.1	64.2	26.0
TR - 25M - 18M	25	18	13.9	35	50.8	63.1	31.3
TR - 25M - 20M	25	20	15.1	35	52.3	64.6	31.3

"D" - Dimension is minimum opening - dimensions are for reference only, and are subject to change without notice.

# REDUCER

TR

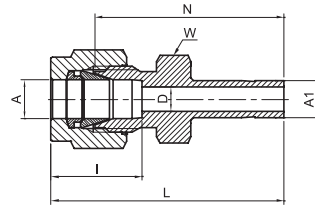


TUBE (METRIC) TO STUB (INCH)							
Part Number	A Tube O.D.	A1 Tube O.D.	D	W Hex. flat	N	L	i
	mm	in	mm	mm	mm	mm	mm
TR - 2M - 2	2	1/8	1.7	12	26.9	33.5	12.9
TR - 3M - 2	3	1/8	2.0	12	26.9	33.5	12.9
TR - 3M - 4	3	1/4	2.4	12	29.5	36.1	12.9
TR - 4M - 4	4	1/4	2.4	12	30.5	37.1	13.7
TR - 6M - 2	6	1/8	2.2	14	29.5	36.9	15.3
TR - 6M - 5	6	5/16	4.8	14	32.5	39.9	15.3
TR - 6M - 6	6	3/8	4.8	14	33.3	40.7	15.3
TR - 6M - 8	6	1/2	4.8	14	38.9	46.3	15.3
TR - 8M - 6	8	3/8	6.4	15	34.5	42.0	16.2
TR - 8M - 8	8	1/2	6.4	15	40.1	47.6	16.2
TR - 10M - 6	10	3/8	7.1	18	36.6	44.2	17.2
TR - 10M - 8	10	1/2	7.9	18	42.2	49.8	17.2
TR - 12M - 8	12	1/2	9.5	22	42.2	52.3	22.8
TR - 12M - 12	12	3/4	9.5	22	43.7	53.8	22.8
TR - 18M - 12	18	3/4	15.1	27	46.0	56.1	24.4
TR - 18M - 16	18	1	15.1	27	52.3	62.4	24.4
TR - 25M - 16	25	1	20.2	35	57.2	69.4	31.3

"D" - Dimension is minimum opening - dimensions are for reference only, and are subject to change without notice.

# REDUCER

TR



TUBE (INCH) TO STUB (INCH)														
Part Number	A Tube O.D.		A1 Tube O.D.		D		W Hex. flat		N		L		I	
	in	mm	in	mm	in	mm	in	mm	in	mm	in	mm	in	mm
TR - 1 - 2	1/16	1.58	1/8	3.17	0.05	1.27	5/16	7.9	1.00	25.40	1.15	29.21	0.34	8.6
TR - 1 - 4	1/16	1.58	1/4	6.35	0.05	1.27	5/16	7.9	1.09	27.68	1.24	31.50	0.34	8.6
TR - 2 - 1	1/8	3.17	1/16	1.58	0.03	0.76	7/16	11.1	0.88	22.35	1.14	28.96	0.50	12.7
TR - 2 - 3	1/8	3.17	3/16	4.76	0.09	2.28	7/16	11.1	1.09	27.68	1.35	34.29	0.50	12.7
TR - 2 - 4	1/8	3.17	1/4	6.35	0.09	2.28	7/16	11.1	1.16	29.46	1.42	36.06	0.50	12.7
TR - 2 - 6	1/8	3.17	3/8	9.52	0.09	2.28	7/16	11.1	1.22	30.98	1.48	37.59	0.50	12.7
TR - 2 - 8	1/8	3.17	1/2	12.70	0.09	2.28	9/16	14.3	1.48	37.59	1.74	44.20	0.50	12.7
TR - 3 - 2	3/16	4.76	1/8	3.17	0.08	2.03	7/16	11.1	1.11	28.19	1.37	34.80	0.54	13.7
TR - 3 - 4	3/16	4.76	1/4	6.35	0.12	3.04	7/16	11.1	1.20	30.48	1.46	37.08	0.60	15.3
TR - 4 - 2	1/4	6.35	1/8	3.17	0.08	2.03	1/2	12.7	1.16	29.46	1.45	36.83	0.60	15.3
TR - 4 - 3	1/4	6.35	3/16	4.76	0.12	3.04	1/2	12.7	1.19	30.22	1.48	37.59	0.60	15.3
TR - 4 - 4	1/4	6.35	1/4	6.35	0.17	4.20	1/2	12.7	1.25	31.75	1.54	39.11	0.60	15.3
TR - 4 - 5	1/4	6.35	5/16	7.93	0.19	4.82	1/2	12.7	1.28	32.51	1.57	39.87	0.60	15.3
TR - 4 - 6	1/4	6.35	3/8	9.52	0.19	4.82	1/2	12.7	1.31	33.27	1.60	40.64	0.60	15.3
TR - 4 - 8	1/4	6.35	1/2	12.70	0.19	4.82	9/16	14.3	1.53	38.86	1.82	46.22	0.60	15.3
TR - 4 - 10	1/4	6.35	5/8	7.93	0.19	4.82	11/16	17.5	1.60	40.64	1.89	48.00	0.60	15.3
TR - 4 - 12	1/4	6.35	3/4	19.05	0.19	4.82	13/16	20.6	1.59	40.39	1.88	47.75	0.60	15.3
TR - 5 - 6	5/16	7.93	3/8	9.52	0.25	6.35	9/16	14.3	1.36	34.54	1.65	41.91	0.64	16.3
TR - 5 - 8	5/16	7.93	1/2	12.70	0.25	6.35	9/16	14.3	1.58	40.13	1.87	47.49	0.64	16.3
TR - 6 - 4	3/8	9.52	1/4	6.35	0.17	4.20	5/8	15.9	1.34	34.03	1.63	41.40	0.66	16.9
TR - 6 - 6	3/8	9.52	3/8	9.52	0.28	7.11	5/8	15.9	1.41	35.81	1.70	43.18	0.66	16.9
TR - 6 - 8	3/8	9.52	1/2	12.70	0.28	7.11	5/8	15.9	1.62	41.14	1.91	48.51	0.66	16.9
TR - 6 - 10	3/8	9.52	5/8	15.87	0.28	7.11	11/16	17.5	1.69	42.92	1.98	50.29	0.66	16.9
TR - 6 - 12	3/8	9.52	3/4	19.05	0.28	7.11	13/16	20.6	1.69	42.92	1.98	50.29	0.66	16.9
TR - 8 - 4	1/2	12.70	1/4	6.35	0.19	4.82	13/16	20.6	1.37	34.80	1.77	44.96	0.90	22.9
TR - 8 - 6	1/2	12.70	3/8	9.52	0.28	7.11	13/16	20.6	1.44	36.58	1.84	46.74	0.90	22.9
TR - 8 - 8	1/2	12.70	1/2	12.70	0.39	9.91	13/16	20.6	1.66	42.16	2.06	52.32	0.90	22.9
TR - 8 - 10	1/2	12.70	5/8	15.87	0.41	10.41	13/16	20.6	1.72	43.68	2.12	53.84	0.90	22.9
TR - 8 - 12	1/2	12.70	3/4	19.05	0.41	10.41	13/16	20.6	1.72	43.68	2.12	53.84	0.90	22.9
TR - 8 - 16	1/2	12.70	1	25.40	0.41	10.41	1-1/16	27.0	1.97	50.03	2.37	60.19	0.90	22.9
TR - 10 - 12	5/8	15.87	3/4	19.05	0.50	12.70	1-5/16	23.8	1.75	44.45	2.15	54.61	0.96	24.4
TR - 10 - 14	5/8	15.87	7/8	22.22	0.50	12.70	1-5/16	23.8	1.81	45.97	2.21	56.13	0.96	24.4
TR - 10 - 16	5/8	15.87	1	25.40	0.50	12.70	1-1/16	27.0	2.00	50.80	2.40	60.96	0.96	24.4
TR - 12 - 8	3/4	19.05	1/2	12.70	0.39	9.91	1-1/16	27.0	1.75	44.45	2.15	54.61	0.96	24.5
TR - 12 - 16	3/4	19.05	1	25.40	0.62	15.75	1-1/16	27.0	2.06	52.32	2.46	62.48	0.96	24.5
TR - 16 - 20	1	25.40	1-1/4	31.75	0.88	22.35	1-3/8	34.9	2.69	68.33	3.17	80.52	1.23	31.2
TR - 16 - 24	1	25.40	1-1/2	38.10	0.88	22.35	1-5/8	41.3	3.03	76.96	3.51	89.15	1.23	31.2
TR - 20 - 24	1-1/4	31.75	1-1/2	38.10	1.09	27.70	1-3/4	44.5	3.23	82.00	4.10	104.1	1.62	41.2

"D" - Dimension is minimum opening - dimensions are for reference only, and are subject to change without notice.