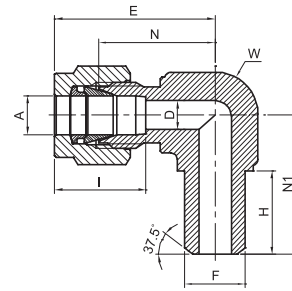


MALE PIPE WELD 90° ELBOW

TMPWE

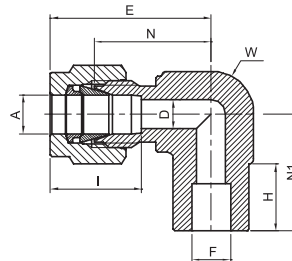


TUBE TO PIPE (INCH)																		
Part Number	A Tube O.D.		F Pipe size		D		W Wrench flat		N		H		E		N1		I	
	in	mm	in	mm	in	mm	in	mm	in	mm	in	mm	in	mm	in	mm	in	mm
TMPWE - 4 - 2TW	1/4	6.35	1/8	10.30	0.19	4.82	1/2	12.7	0.77	19.56	0.38	7.65	1.06	26.92	0.74	18.8	0.60	15.3
TMPWE - 4 - 4TW	1/4	6.35	1/4	13.70	0.19	4.82	1/2	12.7	0.77	19.56	0.56	14.22	1.06	26.92	0.92	23.37	0.60	15.3
TMPWE - 6 - 4TW	3/8	9.52	1/4	13.70	0.28	7.11	5/8	15.9	0.91	23.11	0.56	14.22	1.20	30.48	1.00	25.40	0.66	16.9
TMPWE - 8 - 8TW	1/2	12.70	1/2	21.34	0.41	10.41	13/16	20.6	1.02	25.90	0.75	19.05	1.42	36.06	1.30	33.02	0.90	22.9
TMPWE - 12 - 12TW	3/4	19.05	3/4	26.67	0.62	15.75	1-1/16	27.0	1.17	29.72	0.75	19.05	1.57	39.88	1.45	36.83	0.96	24.5

"D" - Dimension is the minimum opening. These fittings may have a larger opening at the weld end.
The wall thickness of welding edge is based on SCH 80.

TUBE SOCKET WELD 90° ELBOW

TTSWE



TUBE TO TUBE																		
Part Number	A Tube O.D.		F Pipe size		D		W Wrench flat		N		H		E		N1		I	
	in	mm	in	mm	in	mm	in	mm	in	mm	in	mm	in	mm	in	mm	in	mm
TTSWE - 4 - 4SW	1/4	6.35	1/4	6.35	0.19	4.82	1/2	12.7	0.77	19.60	0.31	7.87	1.06	26.98	0.77	19.60	0.60	15.30
TTSWE - 6 - 6SW	3/8	9.52	3/8	9.52	0.28	7.11	5/8	15.9	0.91	23.11	0.38	9.65	1.20	30.98	0.91	23.11	0.66	16.90
TTSWE - 8 - 8SW	1/2	12.70	1/2	12.70	0.41	10.41	13/16	20.6	1.02	25.90	0.50	12.70	1.42	36.06	1.02	25.90	0.90	22.90
TTSWE - 12 - 12SW	3/4	19.05	3/4	19.05	0.62	15.74	1-1/16	26.98	1.17	29.72	0.56	14.22	1.57	39.87	1.17	29.72	0.96	24.38
TTSWE - 16 - 16SW	1	25.40	1	25.40	0.88	22.35	1-3/8	34.92	1.45	36.83	0.75	19.05	1.93	49.02	1.45	36.83	1.23	31.20

"D" - Dimension is minimum opening - dimensions are for reference only, and are subject to change without notice.